



REGIONAL **LEADERS** programme

DEVELOPING BRAVE BUSINESS LEADERS

9X 1:1 MENTORING SESSIONS · PANEL DISCUSSIONS
INSPIRING SPEAKERS & EVENTS · NETWORKING
LEARNING FROM REAL LEADERS

"A leader is one who knows the way, goes the way, and shows the way."
– John Maxwell



**Waterford
Chamber**
Advancing business together



BAUSCH+LOMB



**SE
TU**
Ollscoil
Taicneolaíochta
an Oirdeisirt
South East
Technological
University



REGIONAL **LEADERS** programme

ABOUT

The Regional Leaders Programme is designed to develop leaders for the future in the South East Region. Created by the business community, for the business community, it is aimed at professionals who want to develop their leadership competencies and will benefit companies seeking to increase the capacity of their internal talent pool.

With over 40 leaders from across a multitude of sectors, you will benefit from 1:1 sessions, panel discussions, extensive networking opportunities and inspiring speaker lunches.

The programme runs from September to April with one event per month, and you can arrange your 1:1 mentoring sessions at a time that suits you. Each participant will work with three mentors of your choosing for the duration of the programme, as well as attending both virtual and live events each month.

70% attendance rate is mandatory in order to receive a certificate of completion at our closing ceremony in April.

A full calendar of events is available at the back of the brochure.

Thanks to the funding support of Waterford Chamber Skillnet, the cost of the programme has been reduced from €350 to just €262.50, making this programme the best value for money in terms of leadership development training.

To request a booking form or for further details, contact:

Lynda Lawton

Tel: 087 9379894

lynda.lawton@waterfordchamber.ie

LEADERS



MICHAEL FLYNN

EXECUTIVE CHAIRMAN, FLI GROUP

Michael founded FLI Environmental in 1989 and has spent most of his working life investing in and leading the company from a specialist geosynthetics solutions provider around the world, to the multi-faceted group that the FLI Group is today. Michael's original 3rd level education is in electronic engineering and in 2008/9 he completed a government sponsored leadership program, L4G, run by Enterprise Ireland and led by Duke Corporate Education, focused on scaling a business in the global market. In February 2015 Michael graduated from UCC with an MSc and First Class Honours in Personal and Management Coaching.

Achieving Results

Coaching & Development

Strategic Forward Thinking

Team Leadership



SHANE DEMPSEY

ARC MEDIATION

Shane Dempsey is a trained and practicing mediator since 2008, and is a founding partner of ARC Mediation established in 2010. Shane has mediated over 400 agreements in workplace, family and commercial cases for clients including SMEs, multinationals and public sector organisations. He is a member of the Irish Commercial Mediators Association (ICMA) a certified member of the International Mediation Institute (IMI) and is the treasurer of the Irish Professional Mediators' Organisation (IPMO). He has developed a reputation for innovative solutions to resolving disputes between business owners. Shane's first career was as an IT researcher. He has published academically and presented at conferences on both IT & mediation.

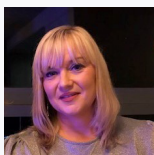
Conflict Management

Communication Skills

Negotiation Skills

Decision-making

Team Leadership



RIA WHITE

WHITE HR & TRAINING

Ria White established herself as a HR consultant and trainer in 2005. Ria has held senior HR roles in the professional services and pharmaceutical industries as well as providing HR & training services and advice to a wide range of sectors for over 25 years. An experienced consultant and trainer Ria has used her extensive knowledge of employment law and HR best practice to bring together a suite of services including HR advice and support, HR & employment law training, mediation service and crisis people management. She is a business graduate of the University of Limerick where she undertook an honours degree in HRM and Law, she is also a Chartered member of the CIPD and was previously a Waterford Chamber Director for four years.

Team Leadership

Coaching & Development

Conflict Management

Managing Under Pressure



LEIGH GRIFFIN

SENIOR ENGINEERING MANAGER, RED HAT

Leigh holds a PhD in software engineering having worked as a researcher for eight years. This work transitioned him towards that of Process Improvement, in particular working in an Agile manner. Leigh has worked as a Senior Software Engineer for several multinationals and currently works for Red Hat. While there he transitioned to being an Agile Coach and later a Software Engineering Manager. This allows him to coach the team through an Agile way of working and help them achieve their career best. Currently he is leading a high performing team of 26 direct reports, geographically spread around the world.

Strategic Forward Thinking

Coaching & Development

Change Management

Agile Workflow

Achieving Results



NIALL GRIFFIN

OWNER/DIRECTOR,
METALMAN ENGINEERING

Niall is currently Owner/Director of Metalman Engineering Ltd, Air products plc, Storage City Ltd, Roadskill Ltd Training Centre, and HUS Spaces Ltd. Niall has vast knowledge of the business world in every aspect, travelled the world to trade fairs and visiting customers at various stages of business development and has a constant appetite for knowledge and new projects.

Strategic Forward Thinking

Operational Excellence

Negotiation Skills

Sustainability

Decision-making



DONAL NOLAN

DIRECTOR OF BUSINESS DEVELOPMENT,
INSTITUTE OF INDUSTRIAL ENGINEERING

An experienced Senior Engineering and Business Change Manager with over 30 years working in a diverse number of industries, as a dynamic team player with extensive cross functional experience. Extensive global experience which includes Ireland, UK, France, Germany, Netherlands, USA, China and Japan. Donal has significant experience managing and working with cross-cultural teams.

Change Management

Communication Skills

Operational Excellence

Achieving Results

LEADERS



EUGENE O'CALLAGHAN

FORMER DIRECTOR (CEO), IRELAND
STRATEGIC INVESTMENT FUND

Eugene O'Callaghan is Director of the Ireland Strategic Investment Fund of Ireland (ISIF), previously the National Pensions Reserve Fund (NPRF), where he has overall responsibility for management of the fund. He was appointed to this role in 2010, having previously been Head of Investment Manager Programme with the NPRF. Mr O'Callaghan joined NPRF in 2005 from Irish Life Investment Managers, where he had been an Executive Director and Chief Operating Officer and had worked for 15 years in a variety of roles. Prior to that he lived in New Zealand for five years where he worked in an investment bank and in a major accounting firm and he started his career with KPMG in Dublin.

Achieving Results Negotiation Skills Decision-making
Strategic Forward Thinking Change Management



BRIAN ROBINSON

CTO, DATAWORKS

Brian is the co-founder and technology innovator behind Dataworks. Brian's areas of expertise lie in business analysis, process automation, software design and development. With over 23 years optimising large scale manufacturing processes, he has seen first-hand how innovative, integrated software applications can create huge rewards for clients. The experience Brian has gained from working with many diverse companies, coupled with his knowledge of software development and his inherent problem solving ability, gives him a unique perspective. Brian also leads the development and technology teams in Dataworks.

Agile Workflow Decision-making
Operational Excellence Team Leadership



SINEAD O'NEILL

BUSINESS COACH

Sinead is a business coach and mentor, with over 25 years experience in Senior Management roles including Associate Vice President of a Fortune 500 top 50 company, CEO of Winterval, Customer Service Manager, Finance Manager and Director of her own private limited company established in 2005. Having qualified as a business coach in 2015. Sinead has continued her own personal development in Team Coaching, Leadership, Mindset and Entrepreneurship. With leadership and strategic thinking in her DNA, Sinead builds confidence and motivates individuals and organisations to take quantum leaps in their businesses.

Team Leadership Coaching & Development
Strategic Forward Thinking



TOMMIE RYAN

NETWORK MANAGER,
WATERFORD CHAMBER SKILLNET

Tommie Ryan is an EMCC accredited Executive Coach (Global Senior Practitioner Level), Multi Award winning event manager, former Festival Director at Winterval (Ireland's largest Christmas festival) and former CEO of Waterford Harvest festival. In Tommie's 15 years of experience in the events industry, he successfully ran his own company while producing events and festivals with a combined audience of over one million people, before successfully pivoting into the Learning and Development industry and Executive Coaching arena. Tommie is passionate about people development and does this by creating powerful connections and empowering individuals to reach their full potential by leading with empathy and authenticity. Tommie is committed to working with others to help them unlock their true potential and achieve their goals.

Managing Under Pressure Coaching & Development
Achieving Results Stakeholder Engagement



JOHN O'GORMAN

FOUNDER OF OFFICEMASTER

John has developed his company from a stationery shop to an organisation that are now Leaders in the Office Furniture market in the South East. With a team of 20 plus, showrooms in both Waterford and Cork, OfficeMaster are working with the largest of multinational companies, providing solutions so that the working environment is the very best available. John, who is a qualified accountant, has strong Leadership skills, a strong belief in Forward Planning and Sales Pipelines. Nothing ever stays the same in business – you must constantly develop and change, as John knows with his 40 years of leading OfficeMaster successfully.

Team Leadership Change Management Sustainability
Managing Under Pressure Negotiation Skills



PAUL NOLAN

GROUP DEVELOPMENT MANAGER,
DAWN MEATS

Paul Nolan is Group Development Manager with Dawn Meats Group, with whom he has worked since 1985. He is currently a Quality Assurance Board Member with An Bord Bia and is President of Waterford Chamber for 2022-2023. Paul has been very much involved with numerous events including West Waterford Festival of Food and Waterford Harvest Festival. Before joining Dawn Meats, Paul worked in Saudi Arabia with Masstock, having previously worked for Bord Bia in London and in the family butchery business before that.

Team Leadership Achieving Results
Communication Skills Managing Under Pressure

LEADERS



JEFF IMRIE

DIRECTOR, M-POWER ENERGISE

Jeff has had an extensive career in Education/Engineering/Manufacturing and Wellness. Working in a global capacity in India, Saudi Arabia, Tunisia, Nepal, Egypt, Germany, Norway, Philippines and now living in Waterford where he was Training Manager for Keltech. His projects as a global educator included Oil and Gas, Solar power, Petro-Chemical, Dakar & Porche rally and many more. He is passionate about transforming lives, empowering individuals and companies in fulfilling their potential. His work in consultancy, troubleshooting and workshops have taken him far and wide and he mixes that with energy healing at Wharton house, and metal sculpture commissions. Jeff was awarded Global Educator of the year by AWS in 2017 Las Vegas.

Coaching & Development

Communication Skills

Achieving Results



SÉAMUS HAYES

PARTNER, FITZWILLIAM TRAINING
AND CONSULTING

Séamus Hayes has over 20 years' experience working with and training micro-businesses from pre-start through enterprise development to business development, encompassing personal effectiveness of owner/managers and key personnel. His background and primary qualifications are in marketing, with post graduate qualifications in International Marketing and Strategic Business Development. He has designed and delivered a wide range of business development programmes, both accredited and non-accredited. He also designs and delivers mentor training and development programmes for both public and private organisations, and has extensive experience of developing business networks. His area of focus for this programme is, business development, marketing, creativity, business planning, costing & pricing.

Team Leadership

Coaching & Development

Operational Excellence

Communication Skills



BRIAN MCGEE

REGIONAL MANAGER, IDA IRELAND

Brian McGee was appointed as Regional Manager for IDA Ireland in September 2022. After spending his early career working in the USA, Brian moved to the South East, where he has held senior positions with Waterford Crystal and Design and Crafts Council Ireland. He is a graduate in Industrial Design with a First-Class Honours MBA from University of Limerick. Brian lives with his family in Waterford city.

Strategic Forward Thinking

Operational Excellence



GEORGINA CARPENDALE

CHIEF FINANCIAL OFFICER,
FITZGERALD POWER

Georgina Carpendale is the Chief Financial Officer at Fitzgerald Power and an experienced finance executive in listed and unlisted companies. A First-Class Honours Degree holder from SETU, a fellow of Chartered Accountants Ireland and a graduate of the Australian Institute of Company Directors. Georgina's passion and work ethic is what sets her apart, with experience in capital raising, company re-structures, the establishment of international subsidiaries, global strategic partnerships and development and execution of company strategy. With 15 years of experience, she mixes a lived-in insight with enthusiastic gusto. For now, her passion lies in start-up/scale-up companies due to the challenges and thrills that come with a business idea's first steps.

Strategic Forward Thinking

Change Management



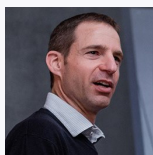
NOEL WINTERS

CHIEF OPERATIONS OFFICER,
FITZGERALD POWER

Noel's passion is to take on a problem, make sense of it, explain it and fix it. A Fellow of the Association of Chartered Certified Accountants (ACCA) Noel has a comprehensive knowledge of the issues that matter to SME sector business owners. With over 20 years' experience, Noel has advised on a wide range of matters including; turnover stabilisation and growth, profit performance and cashflow maintenance. Having advised on numerous acquisitions and disposal cases Noel has particular expertise in business valuations, finance raising and strategic investment appraisal. As a business operator he has a deep understanding of the importance of timely and accurate management reporting and focuses on providing this to proprietors in the SME, community, pharmacy and food & beverage sectors.

Strategic Forward Thinking

Sustainability



HIDAI DEGANI

O.H DEGANI CONSULTANTS

Global Consultant, Speaker, Advisor & Mentor
Director, Co-Owner & Co-Founder at O.H Degani Consultants
Business Mentor at Local Enterprise Office Dún Laoghaire-Rathdown. Broad global senior management experience from various roles, companies & industries (eCommerce, eGaming, FinTech & Loyalty), and a track record of success. Originally from Israel, with extensive global experience including 5 successful relocations to Gibraltar, London, Berlin, Malta & Ireland, by different international companies. Highly proficient in the latest technologies & trends, with the knowledge & skills needed to assess & utilise them to create and maximise real tangible business value.

Strategic Forward Thinking

Operational Excellence

LEADERS



ANDY CROWLEY

GENERAL MANAGER,
TEVA PHARMACEUTICALS

Andy is General Manager at Teva Pharmaceuticals and is passionate about achieving the greatest success possible for the Waterford business. He trained as an engineer and worked initially at Bausch & Lomb before moving to Teva. A believer in continuing self-development he has gained a number of other degrees and qualifications. His great passion is to help people achieve their maximum potential and to overcome the obstacles, true and imagined, that stand in the way. His areas of expertise include, lifestyle coach and mentor, business strategy, operational excellence, change management and employee engagement.

Operational Excellence

Communication Skills

Strategic Forward Thinking

Negotiation Skills



NOEL KELLY

PRINCIPAL,
INSPIRED LEADERS SHAPE SUCCESS

Noel is the Principal and Founder of ILSS, a business focused on Executive Coaching and Business Improvement Initiatives. A professional Engineer with a Higher Diploma in Applied Finance, Noel has more than 30 years' experience as a Global Business Leader, most recently as Senior Business Unit Director in Jabil Healthcare. He has held senior leadership roles with Jabil Healthcare, Nypro, Honeywell and Waterford Crystal. He is a Director of Respond. A fast-moving career in Business, Engineering, Operations & Supply Chain, with a proven history in the development and leadership of high-performance teams, to deliver superior performance.

Strategic Forward Thinking

Coaching & Development

Operational Excellence



JOHN TALLON

FORMER SENIOR ENGINEER, HONEYWELL

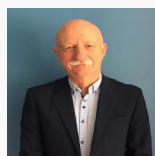
John held several senior management roles in Manufacturing including Facilities, Maintenance and Operations Management at Honeywell. He demonstrates strategic vision and has vast expertise in the area of continuous improvement holding senior site leadership roles in this area for a number of years. He understands the importance of leadership for the achievement of business success and throughout his career John has been a strong role model for employees and gives his time as a sponsor, coach and mentor.

Coaching & Development

Operational Excellence

Negotiation Skills

Managing Under Pressure



DR FEARGAL O'NEILL

MANAGING DIRECTOR, ATPO LTD

Dr. Feargal O'Neill, MD of ATPO helps organisations to identify blocks to development, re-establish momentum and grow to full potential. Feargal has extensive experience as a psychologist working with children and adults. Feargal also has considerable experience in the management and leadership of small and large teams of professional and administrative staff. At senior management level, Feargal has been directly responsible for system development and change in a government body in the following areas: Continuing Professional Development, Research and Development, Data Management, Induction Processes, Internal and External Communication, Policies and Protocols, Legal Affairs and Organisational Review.

Team Leadership

Operational Excellence

Communication Skills

Coaching & Development



AIDAN SHINE

CEO, SOUTH EAST BIC

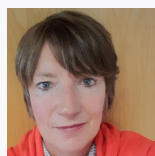
Aidan provides leadership and support to the experienced BIC team in their role supporting entrepreneurs and start-ups in the South East. He has extensive knowledge of the start-up ecosystem in Ireland having assisted numerous companies with their growth strategies, investment-readiness and helping them secure both public and private equity funding. Aidan is also the Halo Business Angel Network Manager in the south east region and matches individual private investors with pre-screened investment opportunities in start-up, early stage and developing businesses. An MBA, Aidan has special interest in areas such as strategy development, business modelling and financial planning. Prior to working in the BIC, Aidan's major experience was in corporate finance and accounting having worked in Japan and Ireland in areas as diverse as group consolidations and as factory accountant.

Decision-making

Strategic Forward Thinking

Change Management

Coaching & Development



DR SARA KENNEDY

HEAD OF DEPARTMENT OF NURSING
AND HEALTH CARE, SETU

Sara has worked in health care and education all of her professional life. Sara is a leader in healthcare in the South East of Ireland with national and international networks that support education and research in the South East Technological University. Sara has delivered many successful programmes in Management and Leadership both in Ireland and Europe over the years. Sara has an interest in leadership and subscribes to lifelong learning and is interested in removing barriers and enabling students of all ages to grow and learn. Learning in leadership, change management and growth and sustainability in education are some of Sara's key interests.

Change Management

Sustainability

Coaching & Development

Team Leadership

LEADERS



DEIRDRE PHELAN

DIRECTOR, PROPERTY PARTNERS
PHELAN HERTERICH

Deirdre is both a director with Property Partners Phelan Herterich Auctioneers, Valuers & Estate Agents, together with coaching small & micro business owners. Her professional background began in Bank of Ireland, and then to estate agency where she worked her way up to becoming a director in a long established auctioneers. Feeling the time was right to spread her wings, Deirdre established her own estate agency in 2020 in tandem with business partner Barry Herterich, while at the same time undertaking and completing a Masters Degree in Coaching in UCC. Deirdre is a passionate and approachable coach who has an unshakeable belief in her client's ability to move forward, given the right environment and coaching support. She understands both the joys and difficulties of being a small business owner and looks forward to working with you towards achieving your chosen goal.

Team Leadership

Coaching & Development

Communication Skills

Strategic Forward Thinking



DAN MULHALL

FORMER IRISH AMBASSADOR TO THE US

For more than 40 years, Waterford native Dan Mulhall served as a distinguished Irish diplomat. His notable diplomatic work includes contributing to the Good Friday Agreement in Northern Ireland, serving as Ireland's Ambassador to the United Kingdom, Germany and Malaysia and, most recently, as Ireland's Ambassador to the US from 2017-2022. After retiring from the Department of Foreign Affairs, Dan became the global distinguished professor in Irish studies at New York University and is currently also a fellow of Magdalene College at the University of Cambridge, England. Dan was conferred with the Freedom of the City of London in recognition of his contribution to relations between Ireland and the financial services industry of the City of London and has also been awarded the Freedom of Waterford.

Negotiation Skills

Communication Skills

Conflict Management

Decision-making



JACK O'KEEFFE

DIRECTOR, FOCUS CAPITAL PARTNERS

Jack has an extensive background in banking, funding, investments and corporate finance across a broad range of sectors. He has held senior executive positions in many of the Irish financial institutions both in Ireland and overseas. He has led and executed transactions ranging in size from €5 to €75m and his recent focus has been in the renewable energy and social housing sectors. Jack has been involved in a number of fundraising in recent years covering both equity and debt. He has an established network across private, family office and institutional investors which enables alternative funding solutions & investment insights to many clients and to efficiently match investors with projects & promoters.

Communication Skills

Achieving Results

Operational Excellence



PROF VERONICA CAMPBELL

PRESIDENT, SETU

Prof Veronica Campbell holds a degree in Pharmacology from the University of Edinburgh and a PhD in Neuropharmacology from the University of London. She was awarded a Health Research Board post-doctoral fellowship in 1996 and was appointed to an academic post in the Department of Physiology, School of Medicine at Trinity College Dublin in 1998. Prof Campbell has extensive undergraduate and postgraduate teaching experience and a successful research record in cell biology, pharmacology and tissue engineering. She has held several senior leadership roles in Trinity College Dublin, including Dean of Graduate Studies and Bursar & Director of Strategic Innovation; in the latter role from 2015 to 2021 Prof Campbell oversaw the commencement of a €300M capital project portfolio in the university.

Strategic Forward Thinking

Team Leadership

Operational Excellence

Decision-making



RONAN CLINTON

PARTNER, EY

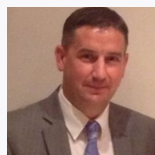
Ronan is a Partner in EY's Assurance practice, based in Waterford. He has over 20 years experience in the provision of audit and assurance services, serving large multinational, private and fast growth businesses in Ireland and internationally. He has a particular interest in Entrepreneurial, fast growing and family businesses expanding both nationally and internationally. He has worked with a wide variety of clients and has significant experience in manufacturing, retail and distribution, professional services and technology sectors.

Strategic Forward Thinking

Negotiation Skills

Operational Excellence

Managing Under Pressure



MICHAEL DEE

MANUFACTURING MANAGER,
BAUSCH + LOMB

A results-focused Senior Production Manager with 28 years experience within the contact lenses industry. Specific areas of expertise include people management, change management, quality, business excellence, new product introductions/transfers, supply chain management and large-scale project startups.

Change Management

Managing Under Pressure

Strategic Forward Thinking

Operational Excellence

LEADERS



JACKIE ROCHE

LEARNING AND ORGANISATIONAL
DEVELOPMENT MANAGER, BAUSCH + LOMB

Jackie is a talented Learning and Organisational Development Manager with expertise in helping Senior Leadership align Human Resource development with strategic business objectives. Proficient at talent and succession planning strategies to drive competitive growth, Jackie is organised and creative with strong leadership, collaboration and networking skills. A strategic thinker and motivational leader with ability to work at all levels of the organisation, she inspires and challenges others to achieve their potential.

Achieving Results

Strategic Forward Thinking

Coaching & Development

Managing Under Pressure



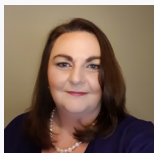
KIERAN WHELAN

MANUFACTURING MANAGER,
BAUSCH + LOMB

Kieran has over 28 years' experience in the Medical Device Industry as part of the Operations Management team. Kieran held various operations roles over the years from production manager, project manager to value stream manager. Kieran has managed site operational readiness for major manufacturing capacity expansions and also new product introductions in Bausch & Lomb. Kieran's expertise is in strategic thinking, teamwork, operational excellence and leading teams. Kieran holds a Hons Bachelor of Business Studies Degree from WIT and Hons MBA in Business Administration from SETU.

Communication Skills

Achieving Results



DEBORAH DUFFY

HR MANAGER, TEVA PHARMACEUTICALS

Deborah is a passionate and driven HR professional, with a Masters Degree in Management Coaching, as well as Assistive Technology Supported Learning. Deborah has extensive experience in leadership and organisational development, within regulated manufacturing, digital customer service (BPO) and academia. Highly skilled in the development of HR strategies and programmes, she delivers practical and sustainable solutions to support business operations. She is most excited when coaching managers and leaders, as they take on new challenges following a step up in their careers. With a strong growth mindset, she values a collaborative approach, with a focus on process, data-driven continuous improvement and project delivery.

Coaching & Development

Operational Excellence



TOM CULLEN

DEPUTY DIRECTOR GENERAL AT THE
SOCIETY OF THE IRISH MOTOR INDUSTRY

Tom Cullen is the Deputy Director General of SIMI which represents over 1,200 businesses within the Motor Sector. Tom has a background in Financial Services, Information Technology and Business and has over 20 years of experience in the Automotive Industry. Tom chairs the following groups, the National Climate Change Forum, the National Franchise Retailers Forum, the Commercial Vehicle Manufacturers Organisation and the National Motor Technical Working Group. Tom is a regular contributor and commentator with national and local media and is also a member of the Corporate Governance Institute reporting on Environmental, Social and Governance issues. Tom is an active Board member of several business and voluntary organisations. He is a keen sportsman and is actively involved as Juvenile Chair of Tramore GAA Club, Waterford.

Communication Skills

Strategic Forward Thinking

Decision-making

Operational Excellence



BENEDEK FRANK

BUSINESS COACH

Benedek Frank is as an experienced business coach, soft-skills and leadership trainer and organisational development partner. Among his areas of interest are communication, conflict resolution, stress management, strategic thinking skills, business model generation, value proposition design and creative problem solving. His work (within a coaching team setting) has been honoured by the International Coach Federation, which awarded him and his team the Prism Award for 2019. Thanks to his previous advertising agency experience, he has learned to think with the minds of the customers instead of the company's internal marketing department. He offers a pragmatic, no-nonsense approach to understanding your own strengths, how you could rebrand yourself and co-create solutions for the various challenges you may face in personal and work lives.

Communication Skills

Conflict Management

Strategic Forward Thinking

Coaching & Development

LEADERS



DEREK LOWRY

MANAGING DIRECTOR,
ALMEGA BUSINESS CONSULTING

Derek is the Managing Director and founder of Almega Business Consulting and works with entrepreneurs, senior management teams and family businesses on a daily basis to help them achieve their strategic goals and objectives. Derek is an experienced Non-Executive Director and is currently on the board of two long-established family-owned businesses based in Waterford. Derek also has a strong track record of raising funds for Irish businesses across all sectors over the past 10 years to help them fund their growth plans. Prior to establishing Almega in 2011, Derek held a number of leadership positions within the financial services sector. Derek spent three years as a Director and Company Secretary of Waterford Chamber and is currently on the Board of the North Munster Money Advisory and Budgeting Service. Derek is a Chartered Director, Qualified Financial Advisor and holds a Diploma in Corporate Finance from the Chartered Accountants Ireland.

Achieving Results

Strategic Forward Thinking



GARY GRAHAM

FOUNDER OF BLOOM
CO-FOUNDER OF HORTITUDE

Gary is the brains behind the hugely successful Bloom show where he led a dedicated team for 15 years. He is also well known to TV viewers as the straight-talking chief judge on RTÉ's Super Garden where he appeared for 14 years. In addition to his work with Bord Bia and Bloom, Gary has spent more than two decades working with owners and managers of hundreds of Irish SMEs, developing marketing initiatives, building exports, and improving profitability all while preserving work/life balance. He spent a decade working with horticulture producers in the Irish Farmers Association, ably representing growers in Ireland and Europe. During his career, he has worked in design, construction, retail, engineering, marketing, and event management. Currently, he is a director and trustee of both Waterford Treasures/Mount Congreve and the Lafcadio Hearn Japanese Gardens in Tramore and chairperson of the board of the Sanctuary in Dublin. He is also a proud past director and chair of GIY. He is also co-founder of Hortitude.

Achieving Results

Strategic Forward Thinking

Decision-making

Operational Excellence

PARTICIPANTS SAY...

"Hugely beneficial"

"Go for it!"

"Mentors were so generous with their time and expertise"

"Improved my leadership competencies"

"I gained confidence"

"A new network of colleagues"

"Invaluable to me"

"Learning from the experience of others"

"Me time"

"Best programme I've done in years"

EVENT SPEAKERS



MICHAEL WALSH

CEO, WATERFORD CITY & COUNTY COUNCIL

Michael started his career in Local Government with Waterford County Council in 1983 and worked between there and Limerick City Council until 2000 when he was appointed as Senior Executive Engineer in Waterford City Council. From there he progressed to the post of Director of Services and became Waterford City Manager in November, 2007. In June 2014, Michael was appointed Chief Executive of the newly amalgamated Waterford City & County Council.



LOUISE GRUBB

FOUNDER, TRIVIAM VET

Louise, a serial entrepreneur, is former CEO and co-founder of NutriScience (veterinary nutraceutical manufacturing business) and Q1 Scientific (stability storage for the pharmaceutical industry) which is growing rapidly and was a finalist in the 2016 Ernst & Young Entrepreneur of the Year Awards. Louise brings over 20 years' experience of the veterinary and pharmaceutical industry to her current role as CEO of TriviumVet. A trained dietitian with Bachelor of Science in Nutrition and Dietetics from Trinity College Dublin and a Masters in Marketing from Dublin City University, Louise has a track record in bringing veterinary pharmaceuticals through development to regulation and market launch. Louise was also named Entrepreneur of the Year in the Waterford Business Awards and was a finalist in the EY Entrepreneur of the Year awards.



MICHAEL STAFFORD

OWNER, CHAPTER COACH TRAINING
AND CONSULTANCY SERVICES

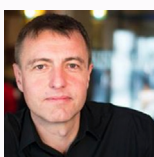
Michael is a People Development Consultant with expertise in Coaching, HR, H&S, and Learning and Development. Passionate about helping individuals, teams and organisations to stay "future fit", Michael is a much sought after speaker and MC due to his wonderful ability to capture an audience's attention and facilitate powerful conversations.



LAURA MONGEY

FORMER SENIOR DIRECTOR, EMEA SITE
LEAD FOR TRUST & SAFETY AT TWITTER

Laura Mongey is an Executive Coach and mother of three, with over 20 years of experience working in Tech and FinTech industries. Starting out, she earned her B.A. in eBusiness and held senior leadership roles, building and scaling diverse, multinational teams in both the EMEA region and Internationally. In her most recent role as Sr. Director in Twitter, she had responsibility for critically strategic and regulatory programs of work. She is an accomplished leader, passionate about empowering and developing others to do their best work as their best selves. Her interests led her to achieve a Postgraduate Diploma in Organisational Behaviour, strengthening her depth of leadership abilities and reigniting a love of learning. Following a Postgraduate Diploma in Executive Coaching, she channelled her passions toward a career pivot where she now facilitates success and fulfilment as an Executive Coach to leaders in the Tech industry.



JEFF TURNER

PROPRIETOR OF MYTFORMATION

Jeff has been working in the Learning and Development arena for the past 20 years. Until recently he was the International Learning and Development Director for Facebook. There were approximately 1000 people in Facebook when Jeff joined - there are now more than 35,000. He has helped the company scale through developing a learning strategy that supported tens of thousands of new hires join the company and learn how to be impactful, quickly. Jeff has a Master's Degree in Performance Management from Leicester University and was on the Board of the International Coaching Federation, Ireland Chapter.



MICHAEL COX

MCX TRAINING & DEVELOPMENT

Michael Cox is one of Ireland's leading authorities on Emotional Intelligence and delivers highly participatory motivational talks, training and workshops in Ireland, USA, South Africa, Turkey, Belgium and the UK. Established in 2007 MCX Training & Development delivers QQI accredited programmes in Training Delivery and Supervisory Management at level 6 on the national framework of qualifications and a range of bespoke people management programmes.



RACHEL DOYLE

FOUNDER, THE ARBORETUM

Rachel Doyle is a graduate of horticulture, a Board Member of Bord Bia and former President of the International Garden Centre Association (IGCA). As founder of The Arboretum, Rachel knows what it means to grow a business. From a small set-up in her back garden almost 45 years ago, Rachel has created a unique horticultural experience out of pure passion and devotion to what she loves. Rachel is the proud recipient of Retail Excellence Ireland's Lifetime Achievement Award, the third person and first woman ever to receive this prestigious recognition. Rachel's focus on business development, retail innovation, customer service and providing quality products has made Arboretum the lifestyle experience it is today. Her success was recognised in 2018 when she was a finalist in the Industry category of the EY Entrepreneur of the Year awards.

EVENT SPEAKERS



JAMES CAWLEY

BUSINESS DEVELOPMENT EXECUTIVE,
IRISH CENTRE FOR DIVERSITY

James provides guidance and support for organisations that are looking to move the needle on their D&I journey of continuous improvement. James is a proud disabled person from rural Co. Longford who lives independently using a Personal Assistance Service. He has established a high profile as one of Ireland's leading Disabled activists and has a wealth of accomplishments in advancing D&I. James was formerly the Policy Officer for a National Disabled Persons Organisation (DPO) which is led by and for Disabled people. He graduated with a BA in Business and Geography, a Professional Masters of Education and most recently completed a Level-9 certificate in "Leading Transformative Education" at Maynooth University. James was a secondary school teacher and has done research on disability issues on a National and European level. James co-facilitated the disability studies certificate course at Maynooth University.



GARY GRAHAM

FOUNDER OF BLOOM
CO-FOUNDER OF HORTITUDE

Gary is the brains behind the hugely successful Bloom show where he led a dedicated team for 15 years. He is also well known to TV viewers as the straight-talking chief judge on RTÉ's Super Garden where he appeared for 14 years. In addition to his work with Bord Bia and Bloom, Gary has spent more than two decades working with owners and managers of hundreds of Irish SMEs, developing marketing initiatives, building exports, and improving profitability all while preserving work/life balance. He spent a decade working with horticulture producers in the Irish Farmers Association, ably representing growers in Ireland and Europe. During his career, he has worked in design, construction, retail, engineering, marketing, and event management. Currently, he is a director and trustee of both Waterford Treasures/Mount Congreve and the Lafcadio Hearn Japanese Gardens in Tramore and chairperson of the board of the Sanctuary in Dublin. He is also a proud past director and chair of GIY. He is also co-founder of Hortitude.



ANDY CROWLEY

GENERAL MANAGER,
TEVA PHARMACEUTICALS

Andy is General Manager at Teva Pharmaceuticals and is passionate about achieving the greatest success possible for the Waterford business. He trained as an engineer and worked initially at Bausch & Lomb before moving to Teva. A believer in continuing self-development he has gained a number of other degrees and qualifications. His great passion is to help people achieve their maximum potential and to overcome the obstacles, true and imagined, that stand in the way. His areas of expertise include, lifestyle coach and mentor, business strategy, operational excellence, change management and employee engagement.



ANDREW CAMPBELL-EDIE

COMMUNICATIONS MANAGER,
IRISH CENTRE FOR DIVERSITY

Andrew brings over 20 years of experience to his Communications role with ICFD. With 'lived experience' gained in the UK and Ireland, Andrew is a D&I champion with a special interest in positive role models. Andrew's career is built on collaborative working and he is skilled at clearly communicating complex messaging. He has had articles about D&I issues published in the Business Post, Marketing.ie and others. He recently completed the MSC Marketing programme at UCD Michael Smurfit Graduate Business School. His study included Marketing for Social change, Leading corporate reputation and he also gained a Certificate in Intercultural Development.



JIM BERGIN

CEO, TIRLÁN

Since joining Glanbia in 1984, Jim has held numerous Senior Management positions across the business. In 2003, he joined the Ingredients business as Operations Manager before moving to the role of Chief Executive Officer of Glanbia Ingredients Ireland (GII) in 2005. With the formation of Glanbia Ireland in 2017, he took over as CEO to move the business on to the next level. In 2021, Jim was appointed Chief Executive of Glanbia Co-op and oversaw the transaction that saw the Co-op assume full control of the Glanbia Ireland business. In 2022 he was appointed to the governing board of the new technological university (TU) for the South East. He is a former Chairman of the Irish Dairy Industry Association.



DEIRDRE LACEY

SENIOR MANAGER OPERATIONAL
EXCELLENCE, BAUSCH + LOMB

A certified ASQ six sigma black belt, with a background in the pharmaceutical and medical device industry, Deirdre has over twenty years' experience across a range of disciplines including quality, operations, new product introduction and continuous improvement. Since 2016 Deirdre has worked with Bausch & Lomb, using her motivational and organisational skills leading the realisation of the Bausch & Lomb Enterprise Excellence Vision. Deirdre also holds a Masters in Business in Lean Enterprise Excellence from WIT.

EVENTS

27 SEP 12.00PM FAITHLEGG HOTEL	Opening Lunch Goal Setting session facilitated by MICHAEL STAFFORD, Chapter Coach/Futureneerz with guest speakers
25 OCT 11.00AM MEDIEVAL MUSEUM	Panel Discussion: What Makes a Leader? Panel: <ul style="list-style-type: none"> • MICHAEL STAFFORD, Chapter Coach Training • LAURA MONGEY, Former Senior Director, Twitter • MICHAEL WALSH, CEO, Waterford City & County Council • JAMES CAWLEY, Business Development Executive, Irish Centre for Diversity • JEFF TURNER, MyTformation • DEIRDRE LACEY, Senior Manager Operational Excellence, Bausch + Lomb Learning Outcomes: <ul style="list-style-type: none"> • Understand skills and strengths of leadership • Overcoming challenges and staying motivated • Growing your professional network - challenges and rewards • Work life balance - the mindset of a leader
22 NOV 10AM-11AM ONLINE	Leadership in Action with PAUL NOLAN, Dawn Meats, JIM BERGIN, Tirlán and MICHAEL WALSH, Waterford City & County Council
17 JAN 9.30AM - 12.30PM WORKLAB	Leading with Emotional Intelligence with MICHAEL COX, MCX Training & Development
21 FEB 12PM - 1PM MOUNT CONGREVE	Fireside Chat: Growing as a Leader with RACHEL DOYLE, The Arboretum and GARY GRAHAM, Founder of Bloom and Co-Founder of Hortitude
20 MAR 11AM - 12.30PM GARTER LANE	Panel Discussion: The Future of Leadership Panel: <ul style="list-style-type: none"> • MICHAEL STAFFORD, Chapter Coach Training • ANDREW CAMPBELL-EDIE, Communications Manager, Irish Centre for Diversity • LOUISE GRUBB, Trivium Vet • ANDY CROWLEY, Managing Director, TEVA Pharmaceuticals Learning Outcomes: <ul style="list-style-type: none"> • Crafting your reputation and legacy as a leader • Building a leadership toolkit • Surviving vs Thriving as a leader • Thinking strategically as a leader to be future-focused
24 APR 12.30PM FAITHLEGG HOTEL	Closing Lunch with guest speaker TBC

DATES & TIMES SUBJECT TO CHANGE



REGIONAL **LEADERS** programme

FOR FURTHER DETAILS:

Lynda Lawton

Tel: 087 9379894

lynda.lawton@waterfordchamber.ie

WWW.WATERFORDCHAMBER.IE

PREVIOUS PARTICIPANTS INCLUDE...

BAUSCH+LOMB TheMunsterExpress



RAPID
CABS • 85 85 85
Waterford's Local Taxi Company

office
master
Work Happier

SE2
PurposeBuilt to FutureProof

DATAWORKS
redefining possibilities

Liberty
Blue
ESTATE AGENTS

teva

JABIL

Sun
Life Financial

emagine

CF Comerford Foley

MEDITE SMARTPLY
INNOVATIVE TIMBER PRODUCTS

MOLLOY'S
FAMILY BUTCHERS SINCE 1932
KEP LAMB • PORK • POULTRY
MOLLOY'S BUTCHERS • ARDEEN

WLR FM
100% Local Waterford
95.5 FM

EY
Building a better
working world

MW KELLER & SON
SOLICITORS

Canfield's SuperValu
Real Food, Real People

Parolla

Waterford Chamber Skillnet is co-funded by Skillnet Ireland and network companies. Skillnet Ireland is funded from the National Training Fund through the Department of Further and Higher Education, Research, Innovation and Science.

Skillnet
IRELAND



An Roinn Breisoideachais agus Ardoideachais,
Taighde, Nuálaíochta agus Eolaíochta
Department of Further and Higher Education,
Research, Innovation and Science



Co-funded by
the European Union